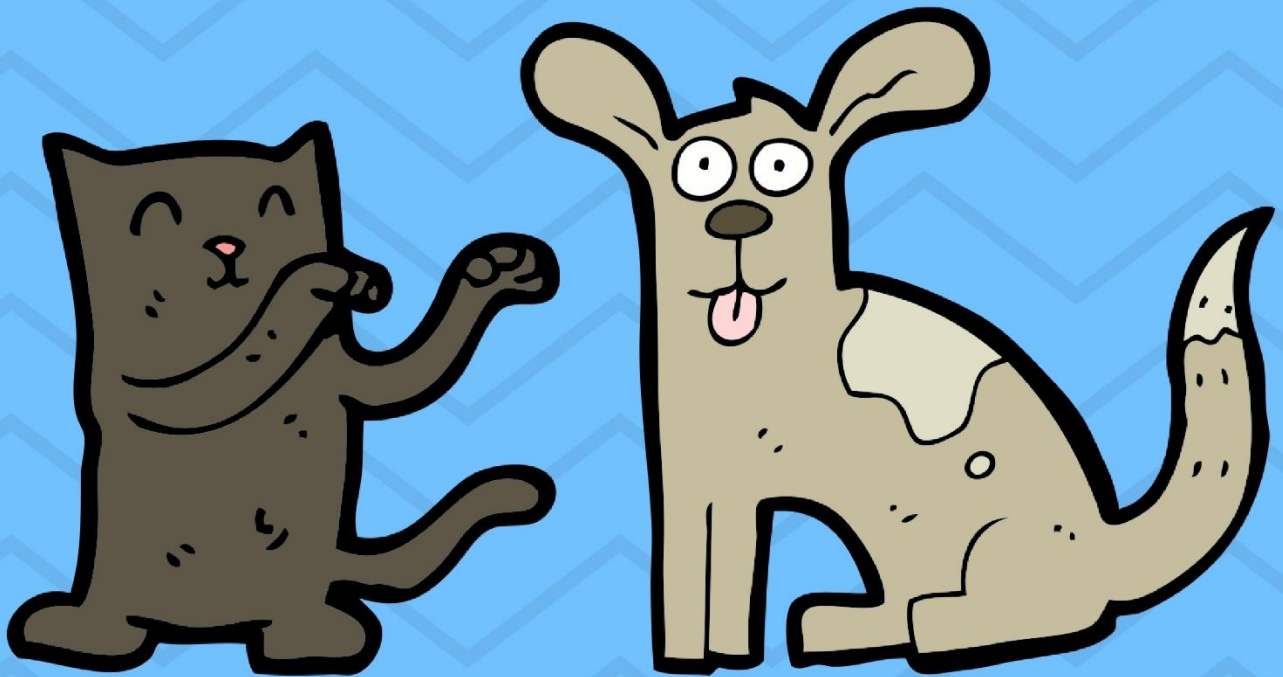




# SERVICE HOUR PROJECTS



**Service hour projects can count toward school service hours.  
These projects cannot be used to fulfill court mandated community service  
hours.**

**Please call or email Miranda a minimum of 2 business days in advance to  
schedule a drop-off and sign off on your hours.**

Miranda Ewing

803-648-6863 Ext. 2

[volunteer@letlovelive.org](mailto:volunteer@letlovelive.org)

# Doggie Bags

(30 Doggie Bags = 3 hours)



Sometimes our furry clients at the VCC need to go home with medications or special instructions. These doggie bags are lovingly filled with everything they need.

## Materials:

- Brown or white lunch size paper bags
- Coloring markers, pencils, crayons, rubber stamps, etc
  - \*no stickers, they don't stay on the bags very well

## Directions:

- Make these as colorful and fun as you would like.
- Use colored markers, pens, pencils, stickers or crayons.
- Write the word "NAME" with a line after it, so we may fill in the patient name.
- Draw any animal of your choice, a cartoon or whatever creative art you can dream up.
- If glue is used for any part of the craft, please make sure it is non-toxic.

# Cat Treat Toy

(20 Treat Toys = 2 hours)



## Materials:

- Empty toilet paper/ paper towel rolls
- Non-toxic magic markers
- Bag of cat treats

## Directions:

- Fold one end of the roll closed
- Place 3-6 treats in the roll
- Fold the other end closed
- Decorate the roll!

# Catnip Fish Toy

(12 Fish Toys = 4 hours)



## Materials:

- Fabric
- Pins
- Pinking shears
- Cotton batting or wool scraps
- Piece of paper
- Catnip
- Needle and thread

## Directions:

- Fold fabric to create two layers and draw a 5 inch long fish
- Cut out fish shapes
- Pin right sides together, leaving ¼-inch seam allowance. Sew seam and leave 1½ -inch opening for filling
- Trim seams with pinking shears
- Turn right side out
- Stuff with cotton batting or wool scraps until firm. Shape a piece of paper into a funnel and use it to add 1-2 Tbsp (you can also fill the whole toy with catnip if desired)
- Hand-stitch opening closed

# “Adopt Me” Bandana

(5 Bandanas = 10 hours)



## Materials:

- Fabric (mix of solid and prints)
- Scissors
- Sewing Machine
- Thread
- Iron

## Directions:

- Cut a piece of fabric 3' x 3" and another different color piece of fabric into a 10" x 10" square
- Fold the 10" x 10" square into a triangle with the right sides together and stitch a seam along the two open edges leaving 2" unsewn.
- Pull the fabric through the opening so it is right side out and hand stitch the opening closed. Iron flat.
- Take the 3' x 3" piece of fabric and use the iron to press ½" of fabric in along each side (so wrong side is touching wrong side).
- Place triangle inside the fold and stitch a seam to connect them. Iron and stitch a seam ¼" from the top of the band. Stitch ends of band.
- Stitch on "Adopt me" or use iron on letters.

# PVC Treat Stick for dogs

(5 pipes = 5 hours)



Determine the size(s) of toy wanted and buy the needed parts accordingly:

- 1" for small diameter toys
- 1.5" for medium diameter toys
- 2" for large diameter toys

## Materials:

- For each toy you will need 3 PVC parts (all for the same size pipe) and PVC pipe:
  1. Male adapter
  2. Screw cap
  3. Slip cap for non- opening end
  4. Corresponding sized PVC pipe

\*We do not recommend ABS pipe (black pipe) due to it being more brittle  
\*Cost \$3.00 to \$20.00 for 10' of pipe depending on size of pipe
- Drill
- Drill bit the size you want the food dispensing holes to be
- PVC glue
- Saw to cut PVC – handsaw, miter saw, etc.
- Small piece of sandpaper

## Directions:

- Cut PVC pipe to desired length – for example:
  - ~ 4" for small pipe diameter (using 1" pipe)
  - ~ 6" for medium diameter (using 1.5" pipe)
  - ~ 10" for large diameter (using 2" pipe)
- Remove the PVC burrs along the cut edges with sandpaper.
- Using PVC glue, attach the slip cap to one end of the pipe.
- Using PVC glue, attach the male adaptor to the other end.
- Screw cap onto male adapter.
- Drill a few holes in the pipe that are large enough for dog's food to pass through
  - \*Alternatively, holes can be drilled first, but it's easier to see locations for drilling after the toys is made.
- Wash toy—it's ready for use!

(Instructions from <https://www.sheltermedicine.com/library/resources/?r=pvc-food-dispensing-toy-how-to-make>)

# Blanket

(20 blankets = 10 hours)



## Materials (per blanket):

- 2 pieces of fleece measuring 4' x 4'
- Measuring ruler/tape
- Fabric scissors

## Directions:

- Lay one piece of fleece on top of the other so they completely overlap.
- Cutting through both layers, cut a 3" square out of each corner. Discard the squares.
- Next, cut slits around the entire blanket. Each slit should be 3" long and spaced 1" apart along all four sides. The slits will look like fringe once you are done cutting.
- Finally tie each pair of fringe together (top layer fringe to bottom layer fringe) using double knots.

(Instructions from <https://thesavvyage.com/community-service-project-no-sew-dog-cat-fleece-blankets-for-shelters/>)



# Cardboard Cat Scratcher

(2 scratchers = 5 hours)



## Materials:

- Cardboard boxes
- Masking Tape
- X-ACTO knife
- Ruler
- Decorative paper or fabric

## Directions:

- Cut the cardboard into identical strips that are 4" wide and make sure the ridges in the cardboard are horizontal when cutting
- Tightly wind one strip into a circle and secure with tape
- Add the next piece and secure with two pieces of tape. Wind around and make sure the surface is even.
- Continue the process until the circle is the desired size and tape securely
- Add decorative paper or draw designs around the edge

# Homemade Cat Caves

(1 cave = 10 hours)



## Directions

- There are TONS of great instructions for crochet and felted cat caves online. Please take your pick and have fun!

# **Coordinate a Pet Food or Supply Drive and receive volunteer hours for your time!**

**\*\*All food items should be new and unopened\*\***

Hot Dogs: 10 packages = 1 hour

Canned Kitten Food 12 cans = 1 hour

New Dog/ Cat Toys 15 toys = 1 hour

Canned Puppy Food 12 cans = 1 hour

1 Kong = 1 hour

10 packages of catnip = 1 hour

Dog/Cat Training Treats 5lbs. = 1 hour

Dry Dog/Cat Food 5 bags = 2 hours

Clean Towels 4 towels = 1 hour

Hand sanitizer 6 bottles = 1 hour

Copy paper = 1 box (~5000 sheets) = 4 hours

Bleach 3 gallons = 1 hour

---

**Service hour projects can count toward school service hours.**

**These projects cannot be used to fulfill court mandated community service hours.**

**Please call or email Jessica a minimum of 2 business days in advance to schedule a drop-off and sign off on your hours.**

Miranda Ewing

803-648-6863 Ext. 2

[volunteer@letlovelive.org](mailto:volunteer@letlovelive.org)

Thank you for all your help 😊